



# Animals including humans

## Objectives

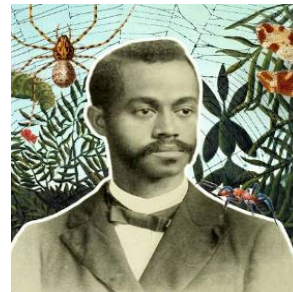
- 1) Seasonal change  
Observe changes and describe weather associated with the **winter** and how day length varies.
- 2) **Identify** and **name** a variety of common animals including fish, **amphibians**, **reptiles**, birds and **mammals** (Y1)
- 3) To **compare** a variety of common animals (Y1)
- 4) Identify and name a variety of common animals that are **carnivores**, **herbivores** and **omnivores** (Y1)
- 5) To identify, name, draw and label the basic parts of the human body. (Y1)
- 6) To identify which part of the body is associated with each **sense**. (Y1)
- 7) Working scientifically

## Questions

- 1) What is a carnivore?
- 2) What is an omnivore?
- 3) What is an herbivore?
- 4) Name the five senses.
- 5) Name an animal that is an amphibian.
- 6) Name an animal that is a reptile.
- 7) What happens to most native trees in winter?

## Famous Scientist **Charles H Turner** (1867-1923)

He was an American zoologist and is best known for his studies of how certain insects behave. He wanted to discover whether honeybees can distinguish colours.



## Scientific Terminology

**Amphibian** - an animal that is born in water but later develops lungs and lives on land



**Mammal** - an animal with fur or hair that feeds on milk from its mother when they are young.



**Reptile** - an animal with scales that is cold-blooded and lives on land.



**Carnivore**-an animal that only eats meat.



**Omnivore** – an animal that eats both plants and meat.



**Herbivore** - an animal that just eats plants.



**Sense**- something that helps us gather information about the world (sight, hearing, touch, smell and taste).

